

ABI Wentworth 2004

38' x 13' - 2 Bedrooms

£23,995

Choice of Premium Plots

With Piped Gas & Car Parking Space

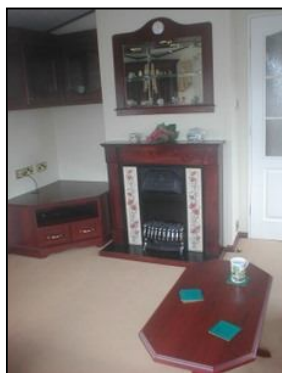
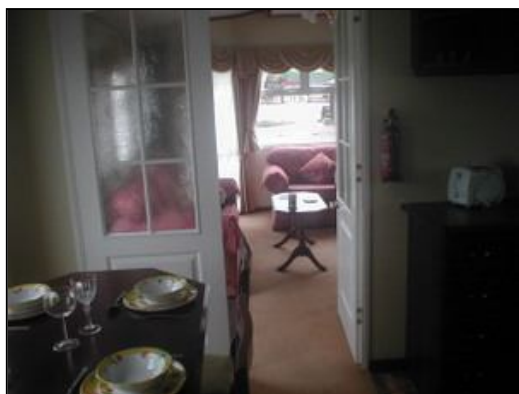


Features:

Central Heating

Double Glazing

Bath & Shower



This beautiful and very spacious and well-appointed holiday home must be viewed to be appreciated. On entering through the back door you have the hallway to your right, with a lovely bathroom with bath and shower over. There is a good-sized twin room with wardrobe space. The main bedroom features a lovely bay window, and through what you might think is a wardrobe, is an en-suite complete with shower! At the other end of the hallway is the kitchen / dining room which has a good amount of storage, an integral fridge freezer, a range cooker with warming cupboard, washing machine space and all woodwork in a rich rosewood effect. Decorative doors close off the lounge. The fireplace is a lovely feature with decorative tiles. It has display cupboards and free-standing homely settee plus two armchairs. This lovely holiday home benefits from central heating, double glazing and an extra foot of width!